

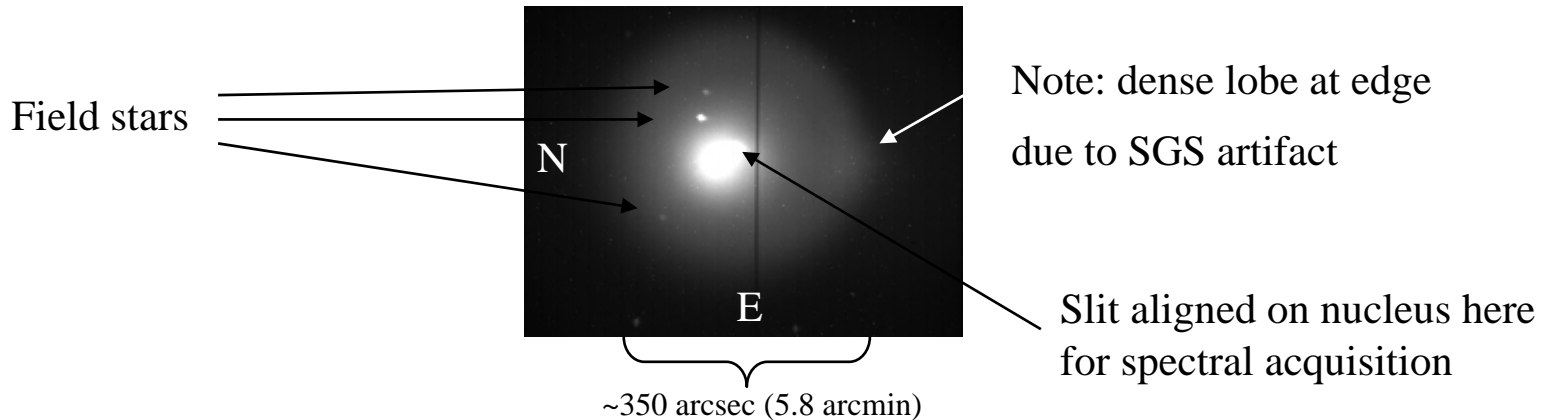
# Comet 17P/Holmes: 28 Oct 07 EDT

Brian McCandless, Grand View Observatory, Elkton, Maryland  
Celestron CGE 1400 and SBIG SGS with ST8-XME

28 October 2007, 4h 45m UT

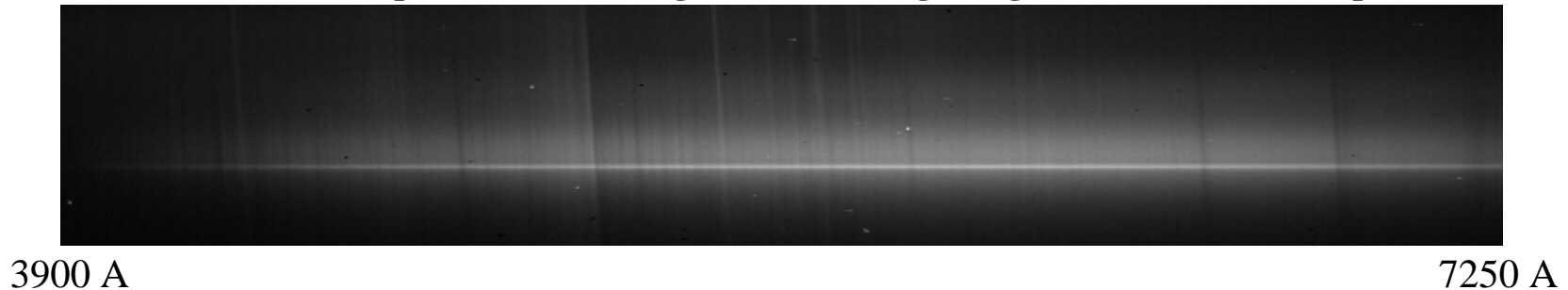
ST-8 XME Tracking CCD  
10 sec exposure

Approximate position:  
RA: 3h 50m  
Dec: +50° 20'



28 October 2007, 4h 59m UT  
Uncorrected JD = 2454402.7075

ST-8 XME Imaging CCD (raw minus dark frame)  
800 sec exposure, 1x4 binning, 150 lines/mm grating, 18 micron slit, 4.3 Å/pixel



# Comet 17P/Holmes: 29 Oct 07 EDT

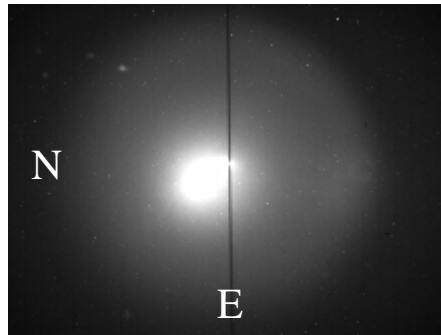
Brian McCandless, Grand View Observatory, Elkton, Maryland  
Celestron CGE 1400 and SBIG SGS with ST8-XME

29 October 2007  
JD = 2454403

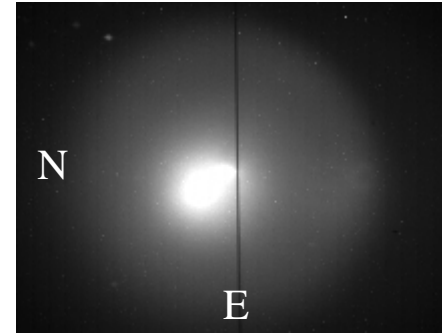
ST-8 XME Tracking CCD  
10 sec exposure

Approximate position:  
RA: 3h 53m  
Dec: +50° 49'

23h 45m UT

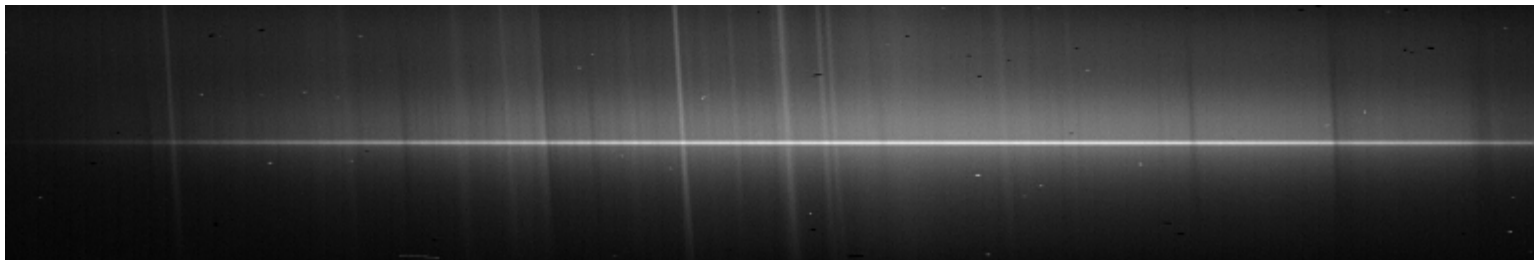


01h 55m UT



29 October 2007, 00h 07m UT  
Uncorrected JD = 2454403.54708

ST-8 XME Imaging CCD (raw minus dark frame)  
800 sec exposure, 1x4 binning, 150 lines/mm grating, 18 micron slit, 4.3 Å/pixel



3900 Å

7250 Å

# Comet 17P/Holmes: Spectral Calibration

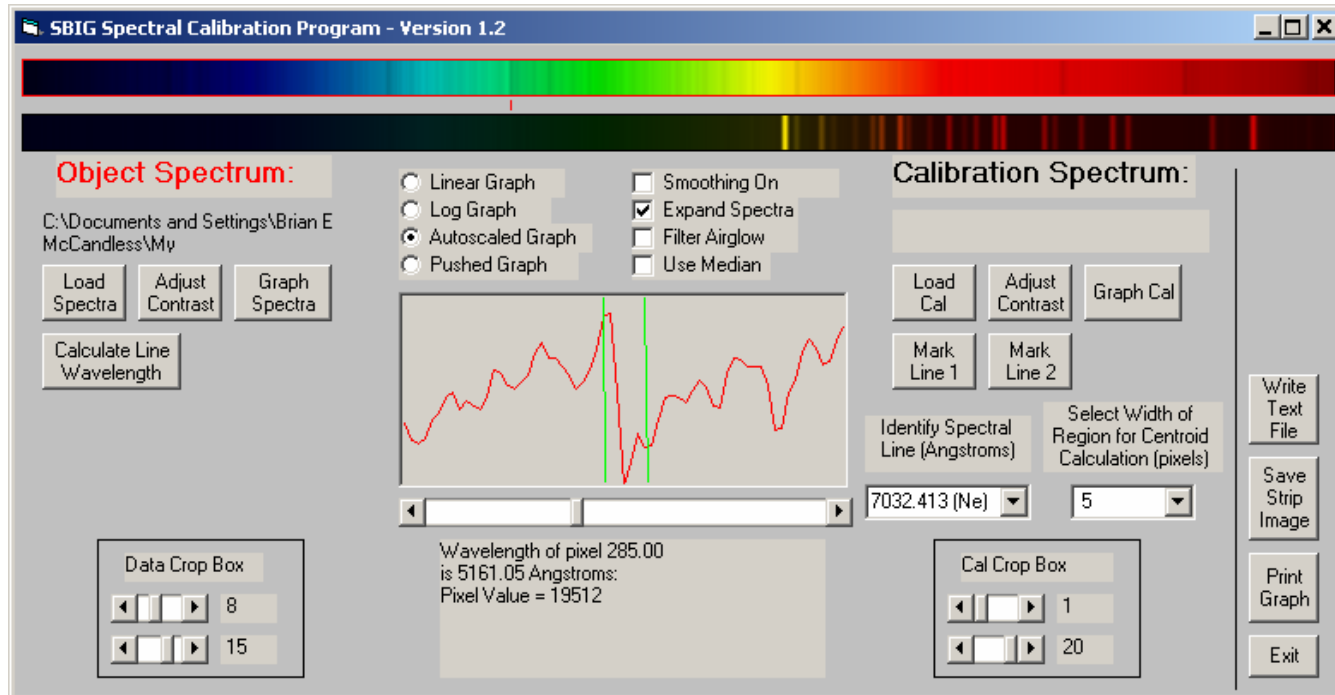
Brian McCandless, Grand View Observatory, Elkton, Maryland  
Celestron CGE 1400 and SBIG SGS with ST8-XME

28 October 2007, 4h 30m UT

ζ Cassiopeae (HR153) standard star: 120 second exposure

28 October 2007, 4h 59m UT

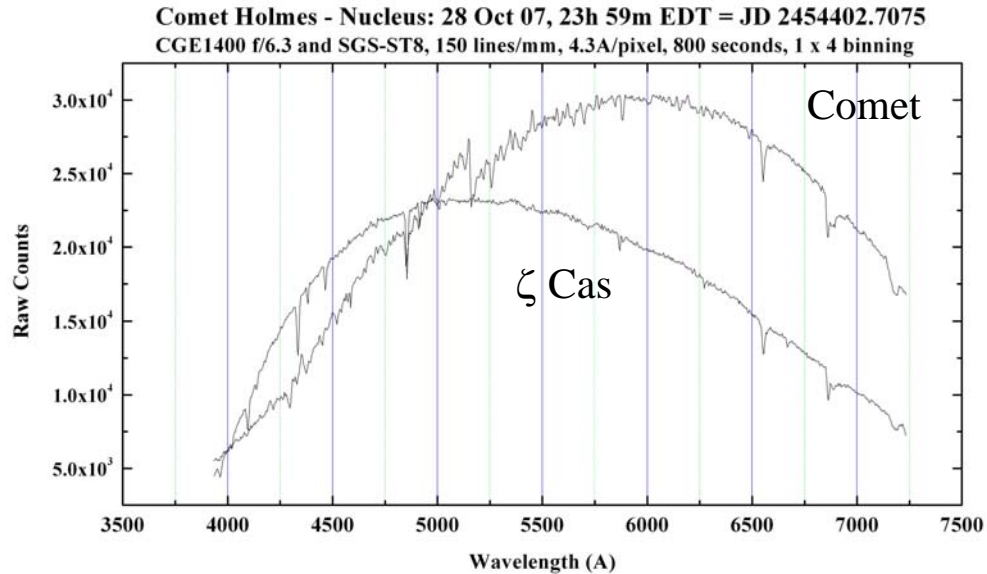
Uncorrected JD = 2454402.7075 Comet 17P/Holmes nucleus: 800 second exposure



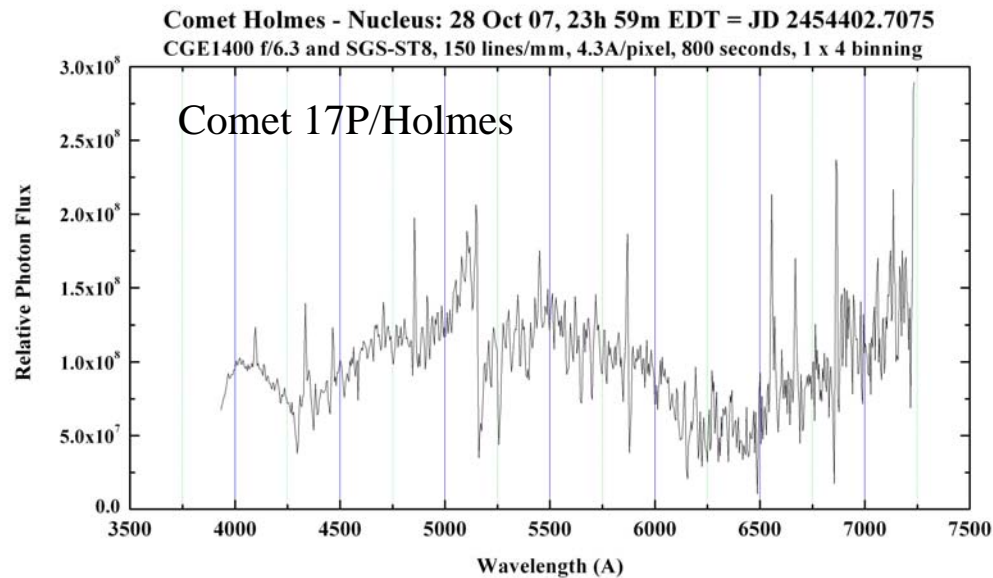
# Comet 17P/Holmes: Spectral Normalization

Brian McCandless, Grand View Observatory, Elkton, Maryland  
Celestron CGE 1400 and SBIG SGS with ST8-XME

Raw Data:



Data Normalized for  
Instrument Response:



# Comet 17P/Holmes: Data for 28 and 29 October 2007

Brian McCandless, Grand View Observatory, Elkton, Maryland  
Celestron CGE 1400 and SBIG SGS with ST8-XME

Data Normalized for  
Instrument Response:

